

THE PENINSULA

NEW YORK



MEETINGS AND EVENTS

The Peninsula New York



Exterior of The Peninsula New York

THE HOTEL

Superbly situated at the center of Manhattan's most glamorous Midtown shopping and entertainment district, the hotel is within walking distance of Central Park, Rockefeller Center, Fifth Avenue shopping, excellent restaurants, historic museums and exciting Broadway theaters.

The hotel occupies a 23-story, 1905 landmark Beaux-Arts building at the intersection of Fifth Avenue and 55th Street. The hotel is AAA Five Diamond-rated.

ACCOMMODATION

The Peninsula New York's 235 luxuriously appointed guest rooms include 50 suites, as well as two palatial superior suites, The Fifth Avenue Suite and The Peninsula Suite, encompassing more than 2,500 square feet (230 square meters) apiece.



VENUES THAT IMPRESS AND INSPIRE

At The Peninsula New York, special events become extraordinary and unforgettable occasions in the heart of Midtown on Fifth Avenue. With a collection of private and distinctive function spaces, impeccable attention to detail from a dedicated team of experts, and an array of personalized services, The Peninsula New York ensures that gatherings both grand and intimate make a singular impression.

CLASSIC SOPHISTICATION, STATE-OF-THE-ART TECHNOLOGY

The Peninsula New York offers a variety of sophisticated meeting spaces to accommodate business gatherings, each elegantly appointed with residential-style

furnishings, and state-of-the-art conference and audiovisual amenities. Enhancements including IT support, special seating configurations, and personalized coffee and meal services allow meetings to proceed seamlessly.

EXQUISITE FOOD AND BEVERAGE OFFERINGS

The Peninsula New York's talented team of chefs and culinary experts can tailor any catering needs and incorporate requested cultural touches in buffet stations, coffee breaks or even elegant five-course menus.



Clement Private Dining Room



Gramercy

VENUES

Gramercy

Timeless • Classic

The hotel's largest function space, Gramercy accommodates business conferences, high-profile events and celebrations. Its upholstered walls and double-paned glass provide hushed acoustics, while a luxurious adjoining foyer is ideally suited for pre and post-event cocktail receptions.

Tribeca

Bright • Airy

Situated at the corner of Fifth Avenue and 55th Street, this intimate venue has large windows bringing light in. The space can be configured to entertain boardroom and theater-style meetings, or banquet brunches and dinners.

Sutton

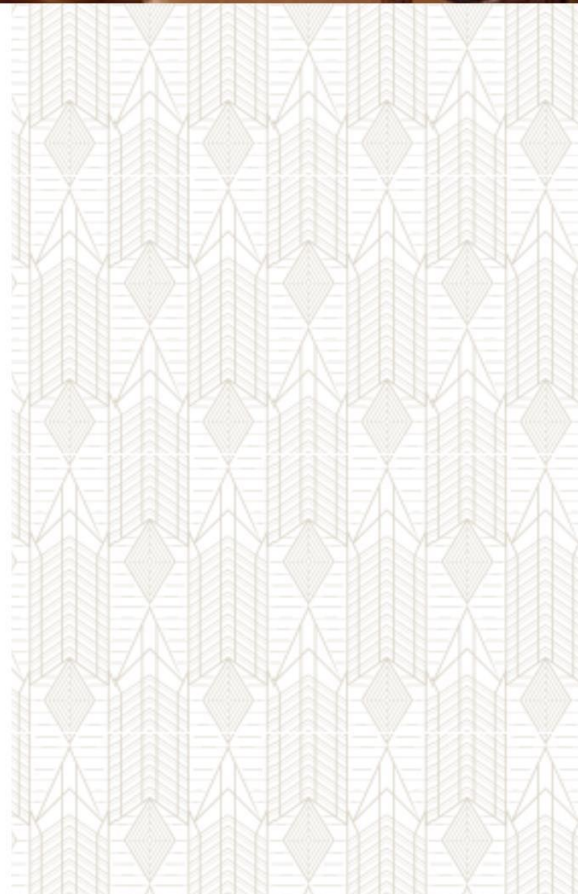
Classic • Refined

The most intimate function room of the hotel, Sutton offers amazing views of Fifth Avenue and is perfect for a breakout room or a private office space.

Chelsea and Greenwich

Quiet • Elegant

Decorated with gold hand-lacquered wallpaper, alabaster light sconces, and distinctive contemporary artwork, Chelsea offers sumptuous yet intimate environs for meetings and private conferences. The space accommodates up to 40 banquet or reception guests, and can be supplemented by the adjacent Greenwich for larger parties.



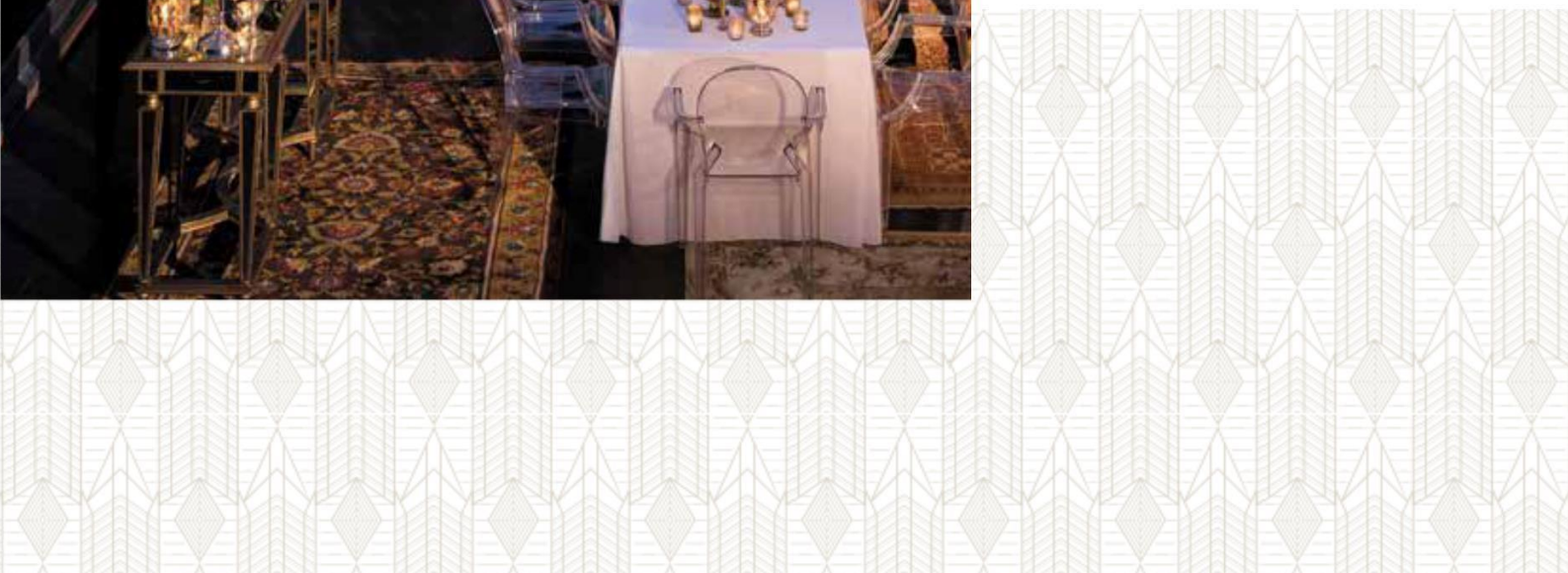


BREATHTAKING VIEWS, SUPERLATIVE SERVICE

Special event venues at The Peninsula New York include some of the most stylish gathering spaces in the city, many of which offer unparalleled views over the iconic Manhattan skyline. When paired with The Peninsula's trademark flawless service, these settings both impress and inspire.

Salon de Ning (Rooftop Bar and Terrace) *Chic • Iconic*

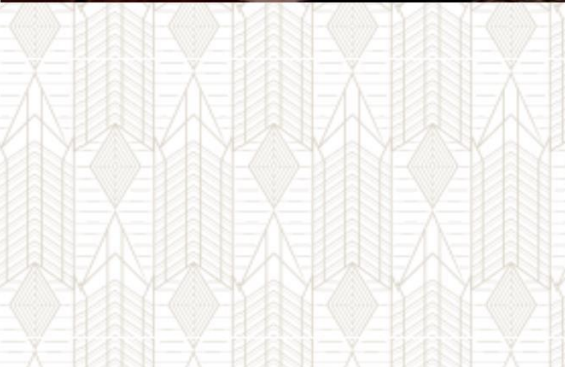
A one-of-a-kind venue offering glittering skyline views and world-class cocktails, the seductive setting of Salon de Ning features an intimate bar with two gorgeous terraces, perfect for a stunning reception. The East Terrace and indoor bar can be booked as a private space for up to 150 guests, while the West Terrace can be booked for up to 100 guests. Both terraces can also be tented. For the ultimate New York event, the entire rooftop space may be reserved for up to 250 guests.



Salon de Ning



Chalet de Ning



Chalet de Ning

*(Seasonal)
One-of-its-kind • Glamorous*
The West Terrace of Salon de Ning has been transformed into Chalet de Ning, a glamorous winter wonderland comprised of two chalet-inspired domes. Perfect for large groups, private gatherings, or those simply looking to experience the magic of the city from above, Chalet de Ning will transport guests to the intimate snow-capped peaks of the Swiss alps right in the heart of Manhattan. A full buyout can accommodate up to 50 guests, while a seated affair can accommodate up to 30 guests.

Sun Terrace

Exclusive • Relaxing
Soaring 22 stories above Fifth Avenue, with views of Central Park, host an event unlike any other at The Peninsula Spa's Sun Terrace with signature cocktails, gourmet hors d'oeuvres and unparalleled views make for an event not soon forgotten.

The Herb Garden

Stunning • Unique
Enjoy a private dinner or cocktail reception in the garden oasis set amongst a New York City backdrop at The Peninsula's Herb Garden, featuring sweeping views and a menu inspired by fresh herbs grown in the garden.



Sun Terrace

CAPACITY CHART

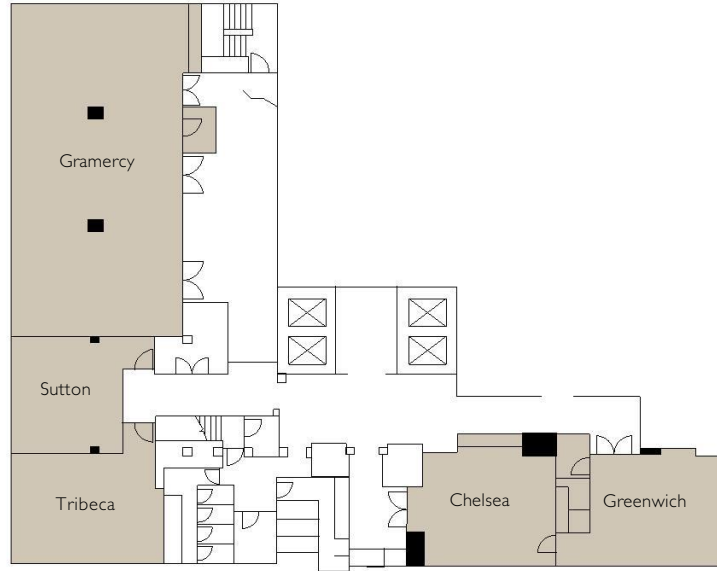
Venue / Location	Area		Capacity					
	Sq M	Sq Ft	Banquet	Cocktail	Theater	Boardroom	Classroom	U-Shape
3rd Floor								
Gramercy	143	1540	100	150	100	25	70	25
Sutton	33	360	16	25	20	15	15	12
Tribeca	40	432	36	35	40	20	24	15
Chelsea	37	396	32	30	40	15	24	15
Greenwich	37	396	24	30	30	12	18	14
22nd Floor								
Sun Terrace	195	2100	N/A	100	N/A	N/A	N/A	N/A
23rd Floor								
Salon de Ning	325	3500	N/A	250	N/A	N/A	N/A	N/A



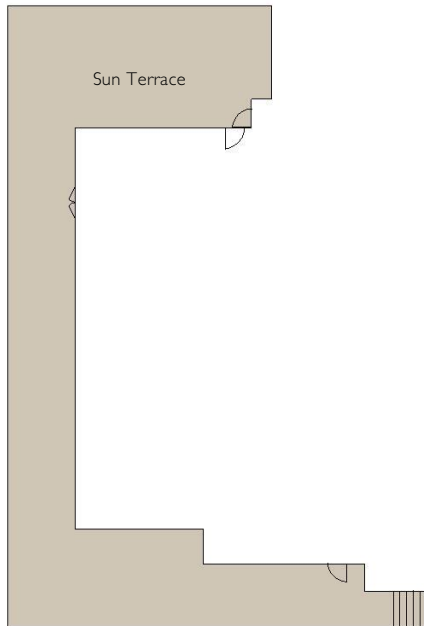
The Herb Garden

FLOOR PLANS

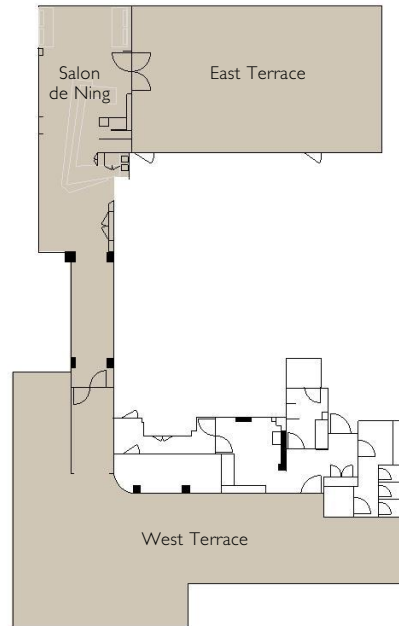
THIRD FLOOR



TWENTY SECOND FLOOR



TWENTY THIRD FLOOR



Please contact the MICE Specialist, Christine Gonzales at christinegonzales@peninsula.com for more information.

700 Fifth Avenue at 55th Street, New York, NY, 10019, USA

US Toll-free: 1 800 262 9467 T: +1 212 903 3151 pony@peninsula.com peninsula.com

HONG KONG • SHANGHAI • BEIJING • TOKYO • NEW YORK • BEVERLY HILLS • CHICAGO • PARIS • BANGKOK • MANILA
Under Development LONDON • ISTANBUL